

kitchen/bath cabinets

OVERALL WINNER

Curve Appeal

This contemporary kitchen captures interest with its inviting curves and warm artistic coloring.

By Lisa Whitcomb

The black granite adds a rich contrast to the custom-colored sunset orange hue of the cabinets.



With its shapely flowing appearance, the sequence-matched curly maple veneer used in this winning custom kitchen is accentuated with a delightful sunset orange, custom color finish formulated by Carmen Vona, co-owner of Carmana Designs of Philadelphia, PA. The result is a contemporary, yet warm kitchen that really caught the judges' eye.

The color, requested by the client, demands attention as it creates a warm atmosphere that is pleasing to the senses. Carmana Designs uses stains and urethane finishes from Seagrave Coatings. In its formulation, the unique color was sprayed on using the shop's custom-made down-draft booth. The high-gloss, closed-pore finish plays with the lighting in the kitchen and adds a touch of elegance to the sleek cabinet design created by Vona.

The high sheen was achieved using a polyester sealer and finished with a urethane topcoat. "Getting the color right meant working closely with the client until the desired hue was achieved," says co-owner, and wife, Anna Maria Vona of her husband Carmen.

In addition to creating the inviting color, Carmen designed and fabricated the cutting-edge contemporary kitchen with radii cabinetry and counters. "The client began with a \$4,000 kitchen allowance from the home builder, Prestigious Homes by Neil Lansman. However, when the client reviewed the plans, he requested cabinetry with curves," Anna Maria recalls. Carmen continued adding curves to the plan, until finally the kitchen's design met the client's expectations and approval. In the end, the kitchen cabinetry was \$90,000, exclusive of design time, granite counter-tops, backsplashes, flooring, lighting and appliances.

Production ensued in the Vona's 23,000+ square-foot shop using a variety of equipment, including a QuickWood Pro sander, an SCMI Uno widebelt sander and SCMI panel saw, a Brandt edgebander and a Weing Profimat six-head moulder. The curly maple veneer panels, supplied by Bay Ridge Lumber, were sequence matched and numbered. A vacuum press was used to lay up the veneers on bending ply, MDF and melamine-coated particleboard (MCP).

Custom stainless-steel pulls were also fabricated by Carmana Designs and fashioned with a smooth tubular curve that echoes the kitchen's shapely theme. "The kitchen is a sequence of sensuous curves," Anna Maria says. "The concave, three-door pantry unit is



Carmana Designs Ltd.

Philadelphia, PA

www.carmanadesigns.com

Project: High-end custom kitchen

Year Established: 1981

No. of Employees: 5

Shop Size: 23,000 square feet

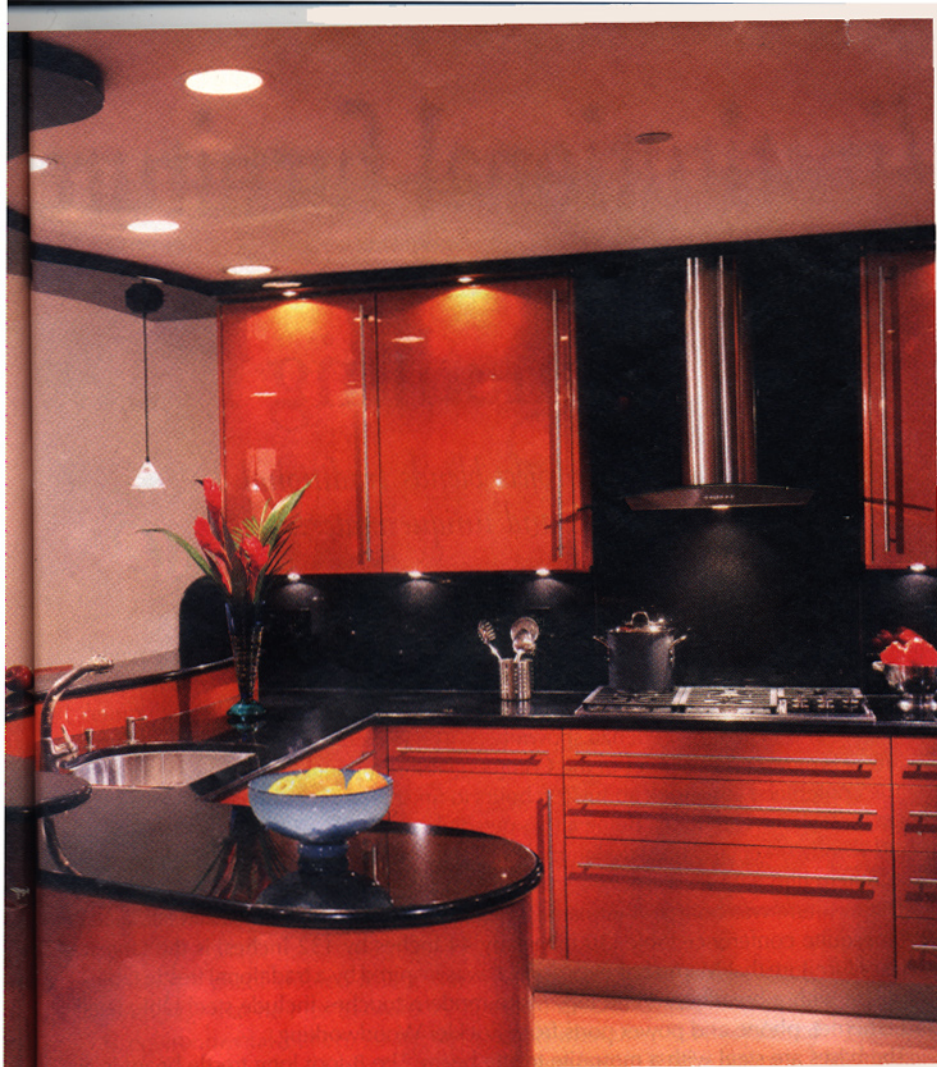
Specialty: High-end custom cabinetry

Project Notes: A high-gloss, closed-pore finish was used on the curvaceous cabinets to accentuate their flattering sunset orange hue.



The flyover on the ceiling is connected to the cabinetry on the adjacent wall with just one screw. Its shape mimics the curved peninsula cabinetry beneath.

All photographs courtesy of Barry Halkin.



"Incredible coloration of finish and beautifully placed lighting made this project stand out."

— Robb Kleeman

"Curves, minimal ornamentation, contemporary...this kitchen represents all these features and more. It is dramatic, yet highly functional, with recessed lights on the bridge, ample cabinetry and rich warm coloring."

— Julie Smith

noteworthy for not only its radical design, but also for its execution and installation. The cabinets behind the pantry unit are trapezoidal in shape, so they could maximize space by following the walls behind them."

Carmen also designed the flyover for the ceiling that emulates the shape of the curved peninsula below. The peninsula houses the sink, dishwasher and breakfast bar. The flyover, fabricated using MDF, was designed and engineered to not show any means of anchoring it to the ceiling." Carmen designed the flyover so that only one screw was necessary to secure it in place," Anna Maria notes. The flyover was

painted a high-gloss black to match the granite counters and backsplashes. "The kitchen is beautiful. It is cohesive and unified, symmetrical and asymmetrical all at the same time," she adds.

The lighting scheme in the kitchen, designed by Carmen as well, includes recessed fixtures; under-cabinet, low-voltage lighting and decorative fixtures by Artemide incorporated into the flyover.

The client loves this kitchen so much that he has asked Carmana Designs to design and fabricate another kitchen in a new home being built using many of the same curves, this time in a light-colored, quarter-sawn figured English sycamore. ■



The concave three-door pantry unit allows the kitchen's curved theme to flow un-interrupted into the dining area.

honorable mention

December 2003

CWB

Custom Woodworking Business



Carmana Designs Ltd.

Philadelphia, PA

www.carmanadesigns.com

Category: Kitchen/Bath Cabinets

Project: Contemporary custom kitchen

Materials: Plain-sliced white maple veneer, along with Salice hinges and Blum Tandem drawer slides. Custom-made stainless steel handles were curved by hand for the curved pantry doors, and a stainless steel tambour door for the appliance garage was fabricated by Winona Industries.

Construction: Three curved pantry units incorporate a drywalled closet, a tangle of existing plumbing lines and a fire hose encased in a wall. Anna Maria Vona, vice president, says that the curved pantry doors were fabricated around the closet by building a false cabinet ceiling and then fabricating the doors to look seamless. Production equipment used includes a Brandt edgebander, SCMI panel saw and a Weinig Profimat moulder. *Photo by Barry Halkin.*

